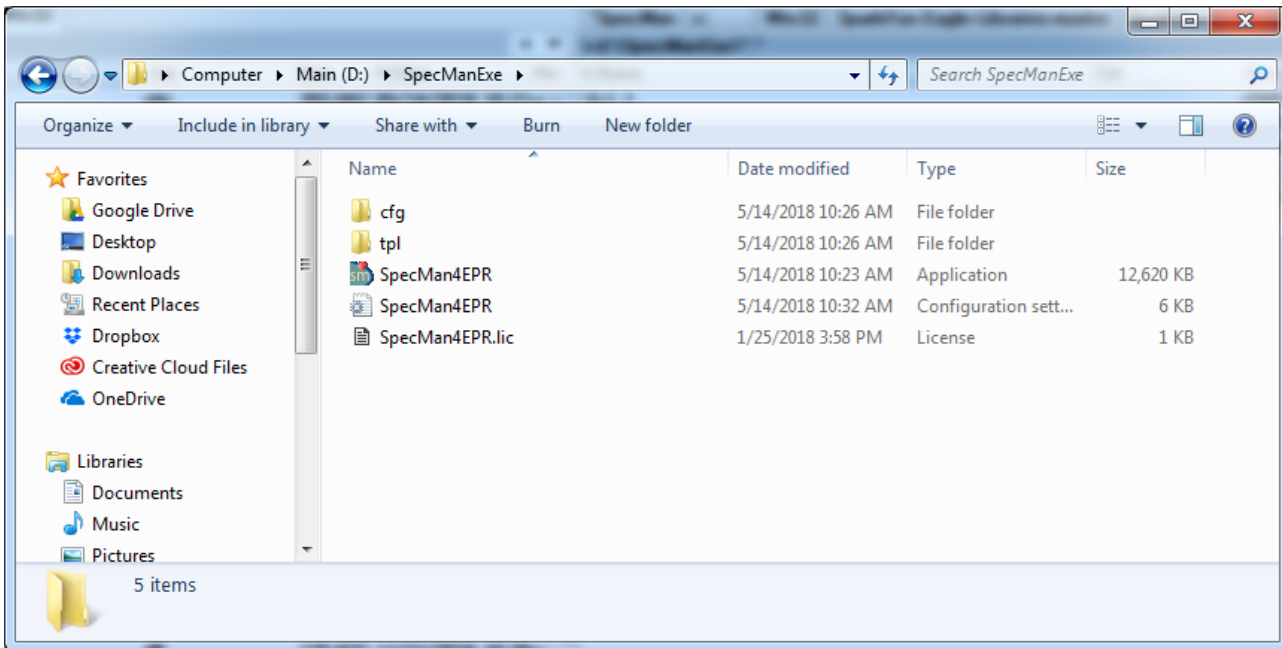


SpecMan4EPR installation instructions

Software Installation

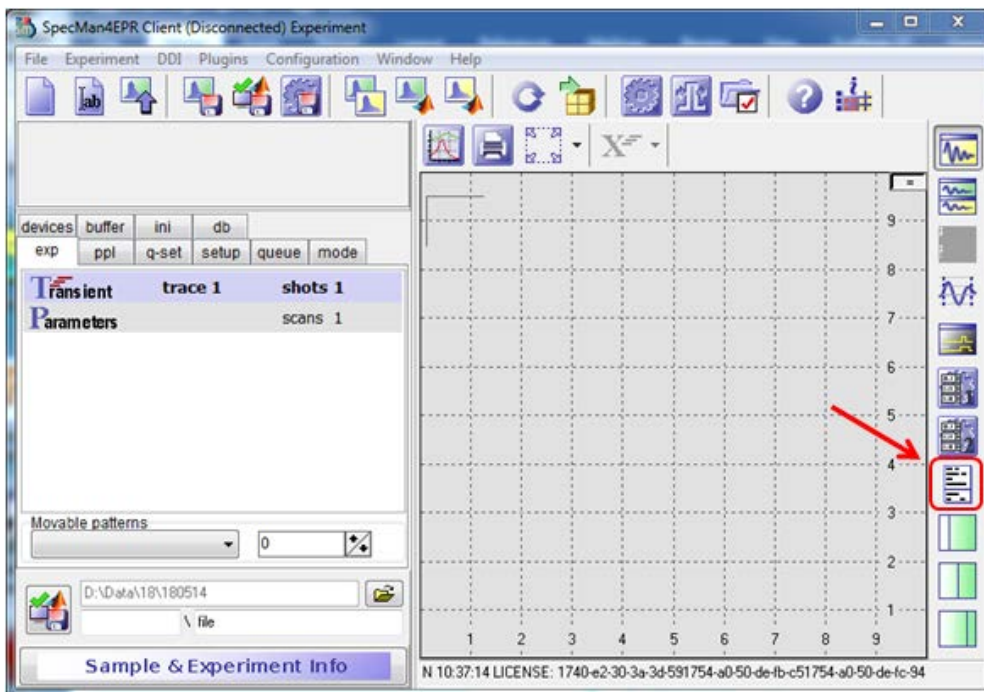
Unzip the installation package in to a folder.



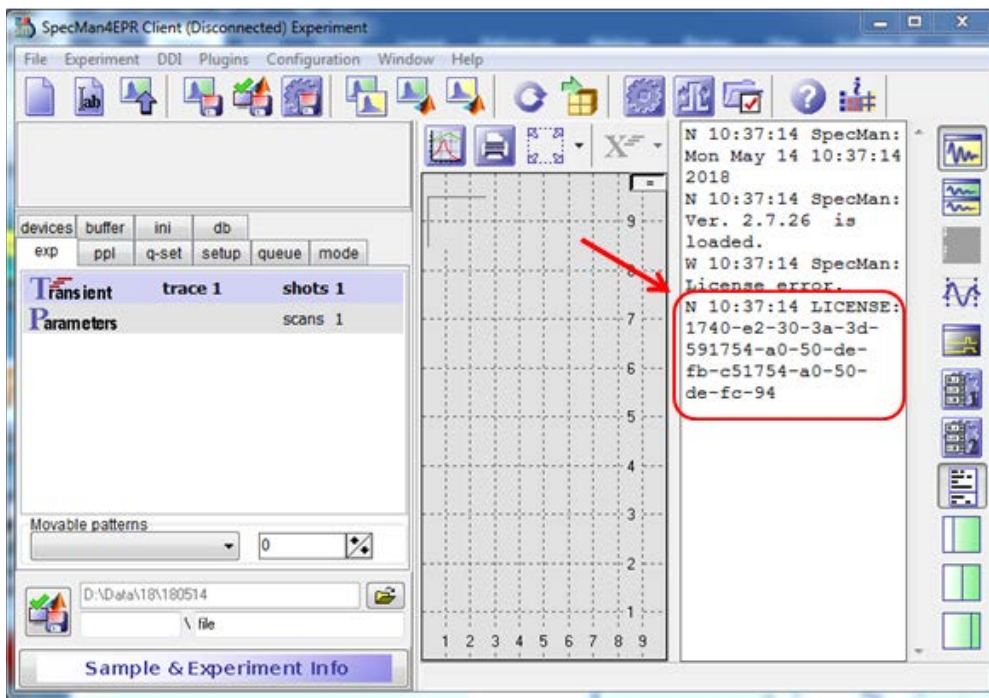
Launch SpecMan4EPR.

License Installation

Skip this step for the Demo version. Launch SpecMan4EPR. Press Log file button.

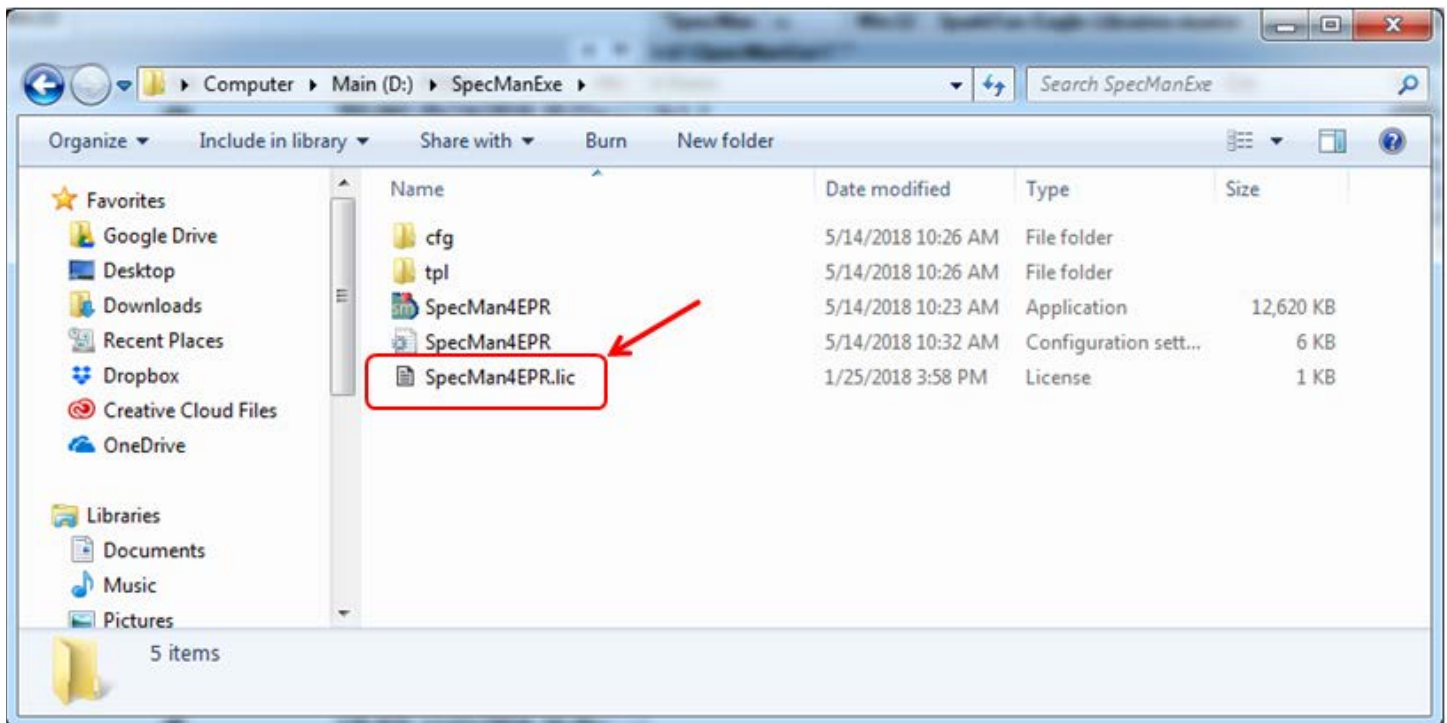


Copy License information and send it to Femi Instruments.



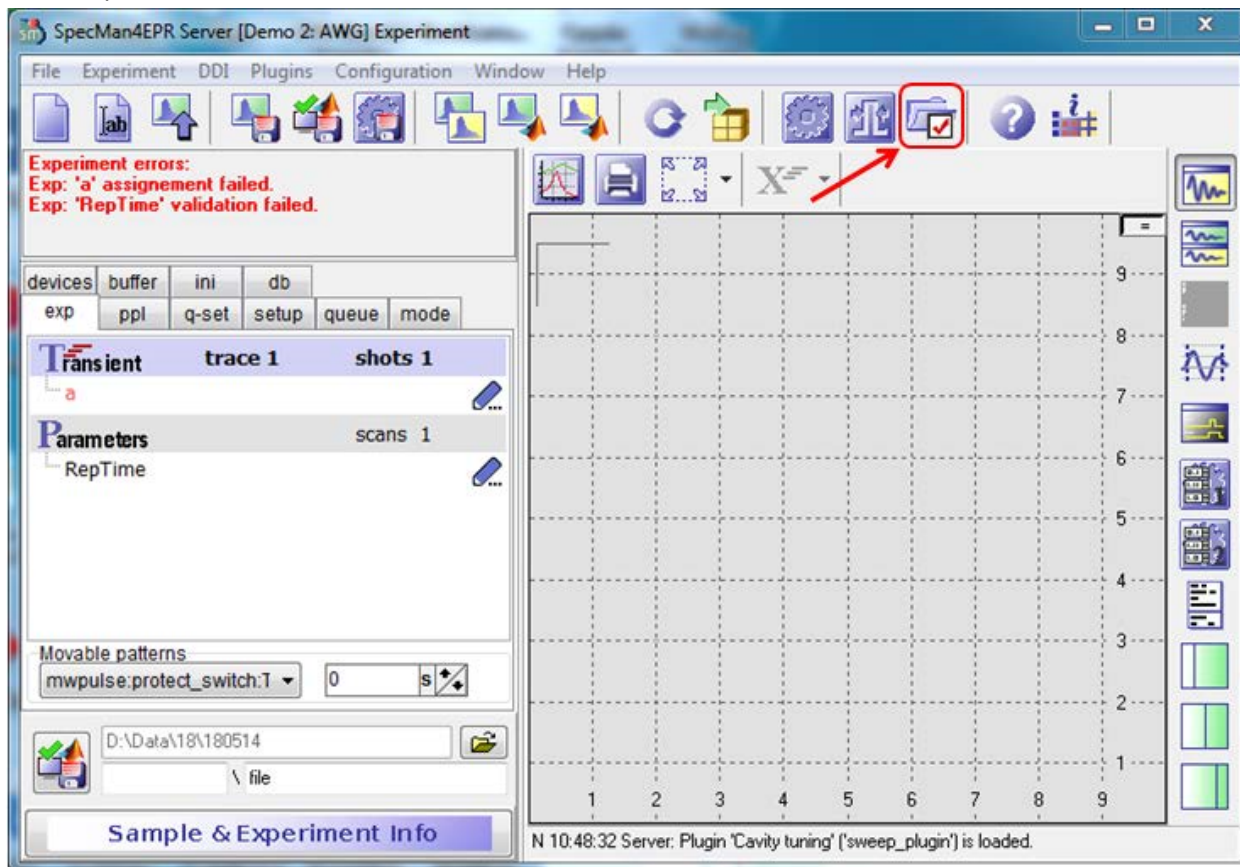
Example: N 10:37:14 LICENSE: 1740-e2-30-3a-3d-591754-a0-50-de-fb-c51754-a0-50-de-fc-94

Femi Instruments will send the license file SpecMan4EPR.lic which must be copied to the installation directory.



Configuration of SpecMan4EPR

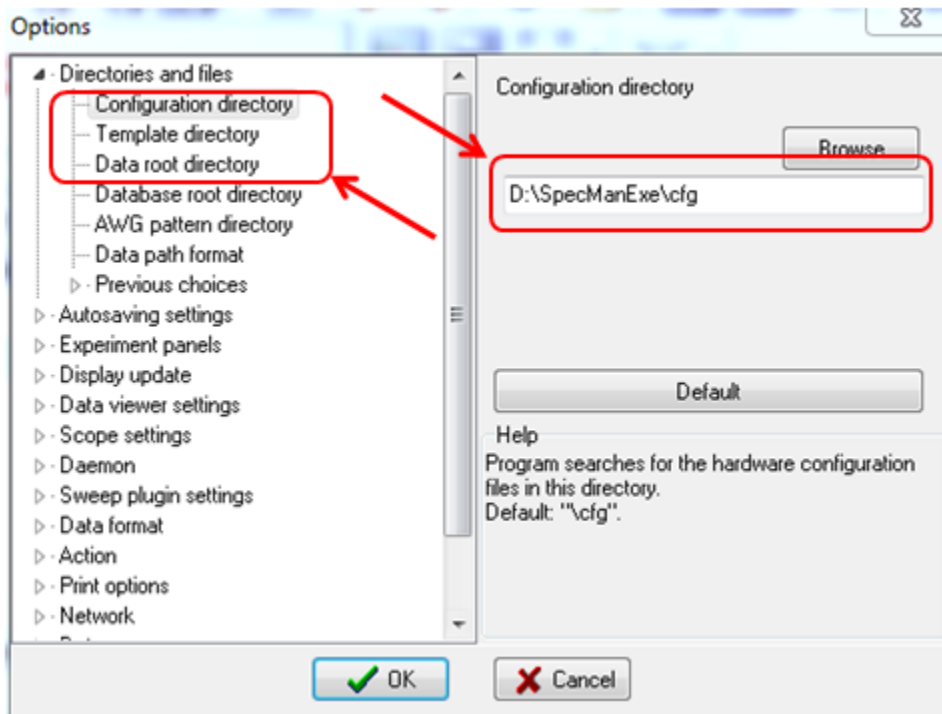
Select Options button.



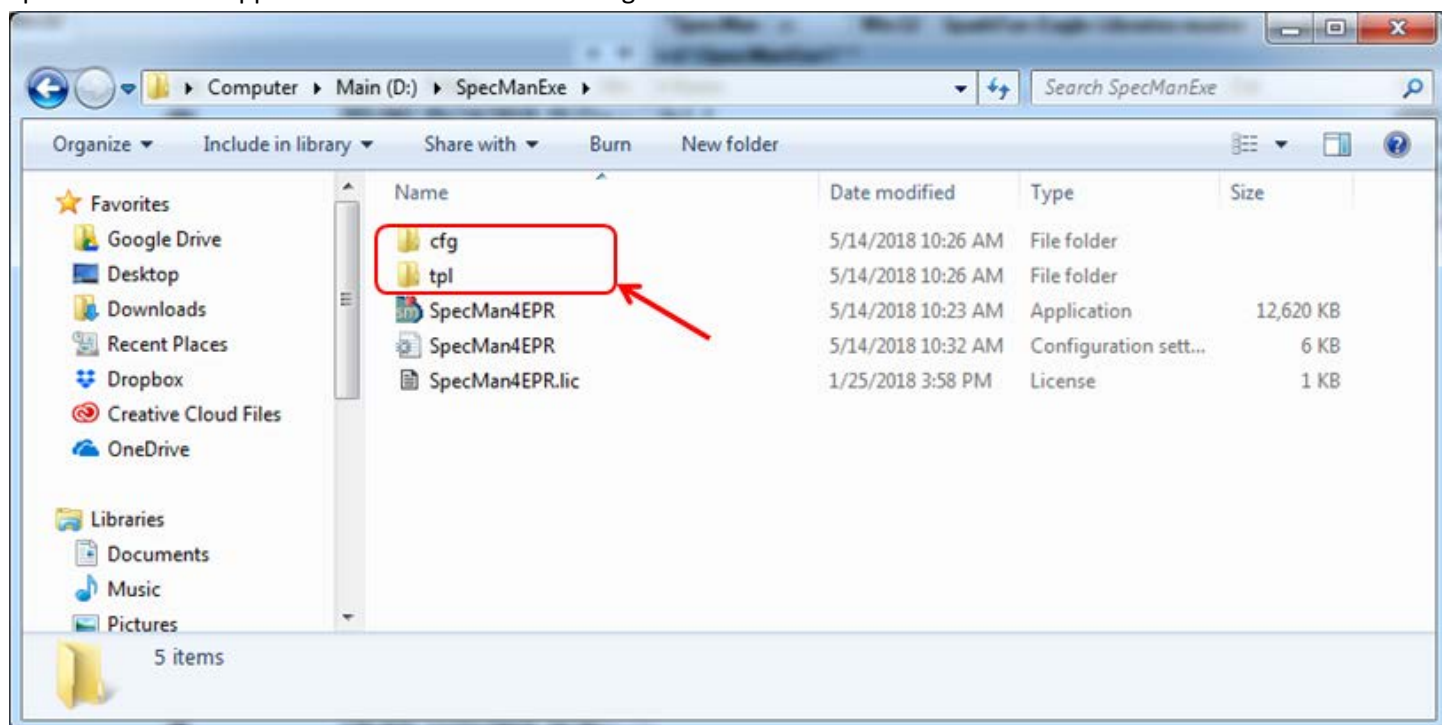
Set the directory for configurations <SPECMAN4EPR FOLDER>\cfg

Set the directory for templates <SPECMAN4EPR FOLDER>\tpl

Set the directory for data <SPECMAN4EPR FOLDER>\data

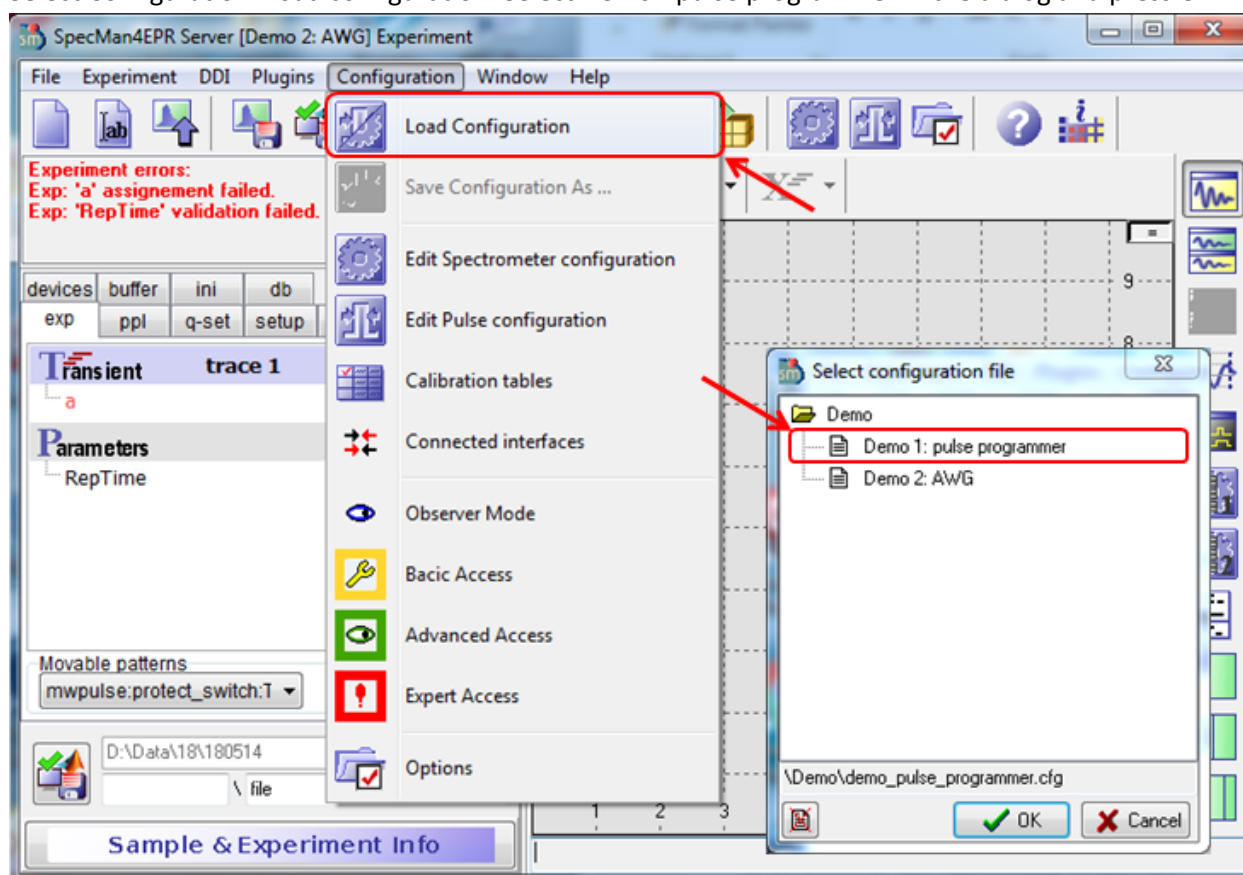


SpecMan4EPR is supplied with demonstration configuration files



Demonstration of pulse EPR capabilities

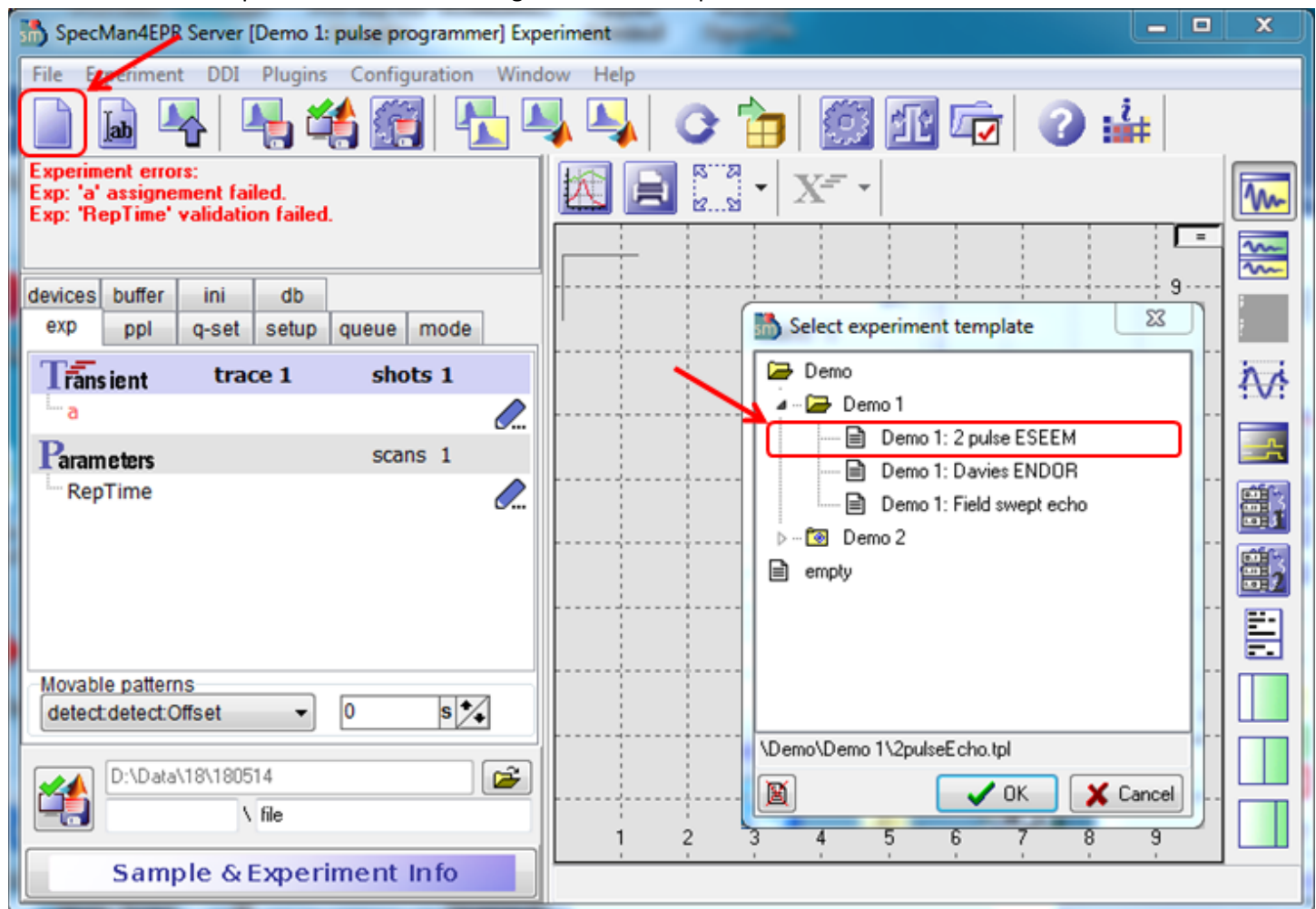
Select Configuration>Load configuration. Select Demo1:pulse programmer in the dialog and press OK.



The window title bar will display the loaded configuration:



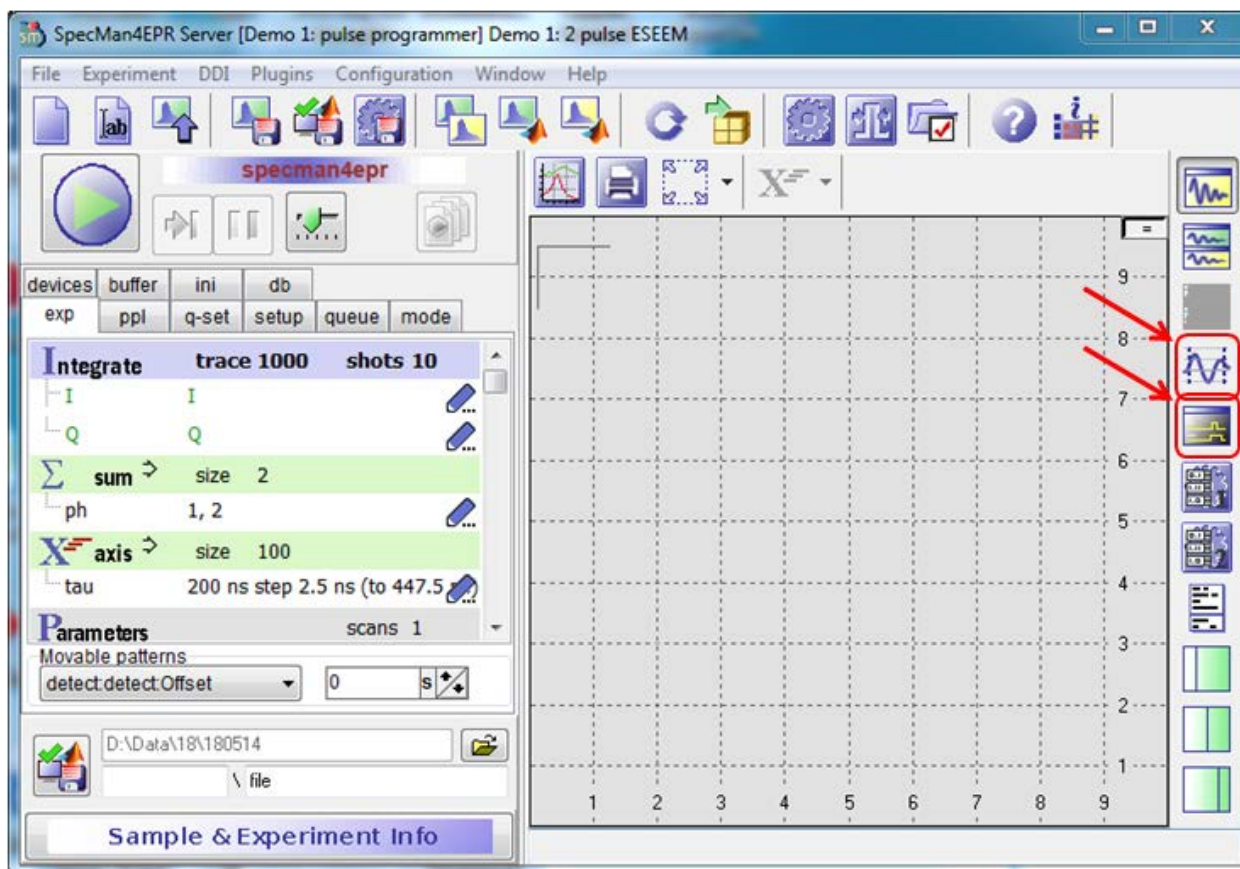
Click on the Load template button. In the dialog select Demo1:2pulse ESEEM



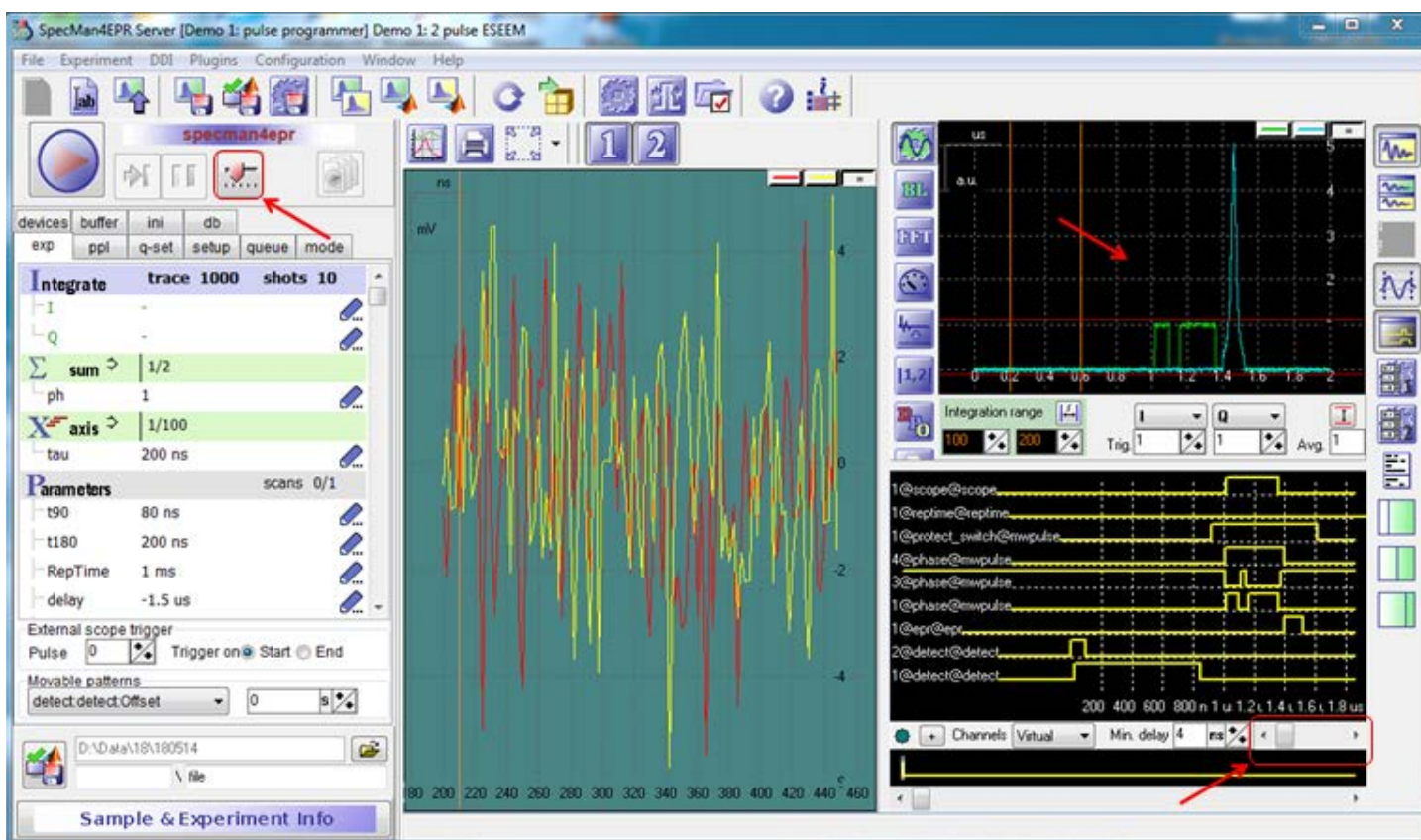
The program is ready to run.

Select Scope and Sequence visualization buttons.

In demonstration mode software is using simulated devices to generate the signals. Scope window displays time traces from the simulated digitizer. Sequence visualizer shows sequence of pulses generated by pulse programmer.



Press Tune mode button. Double click inside the scope window to rescale the traces. Use slider bar in the sequence viewer to display complete sequence.



More help on SpecMan4EPR

The manual for SpecMan4EPR can be found online: <http://specman4epr.com/>

Closing SpecMan4EPR

Make sure the program is not in Run or Tune mode. Press Run/Stop or Tune button to stop the software. The software can be closed now.